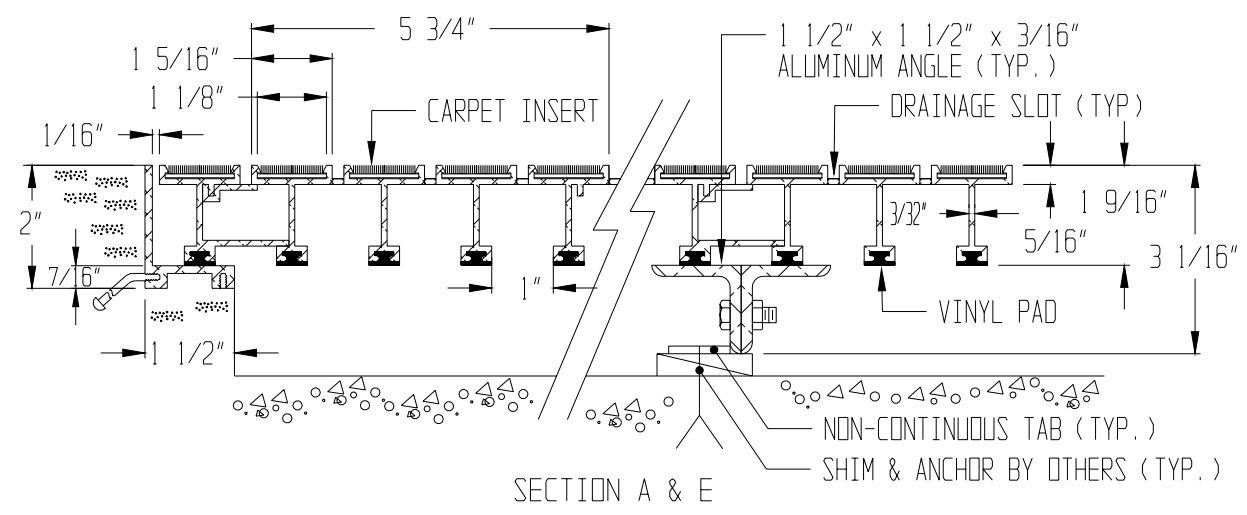
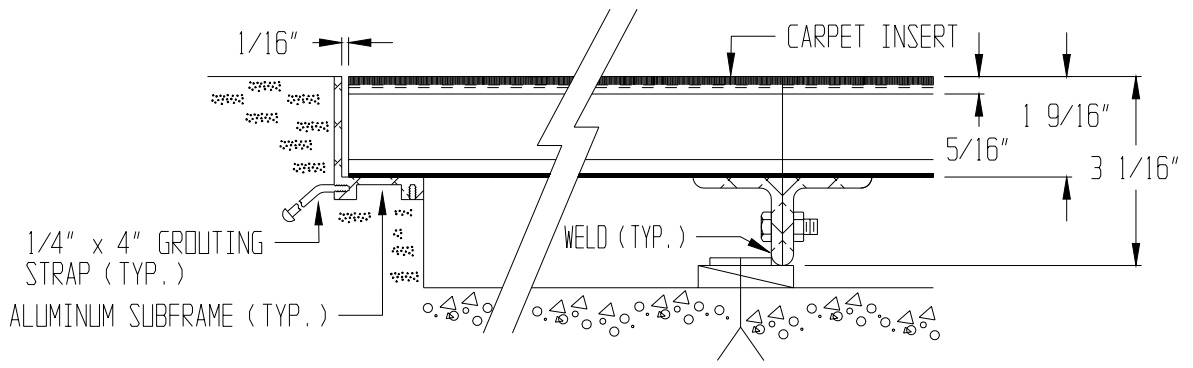


PROJECT:

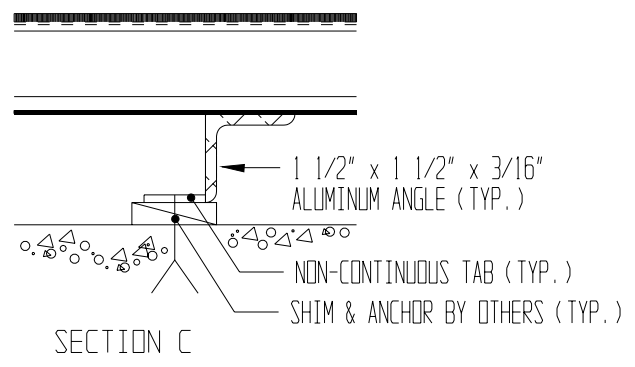
MODEL: *KDCP Alum Entrance Grid w/carpet inserts, Alum Subframe - PIT APPLICATION*



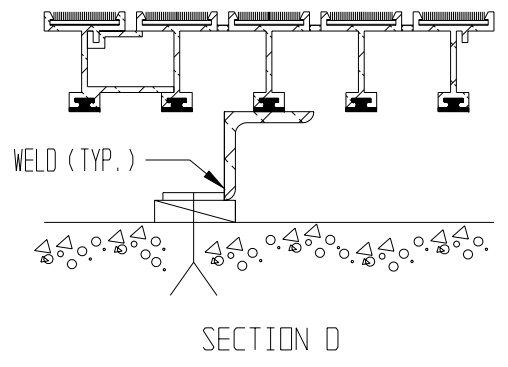
SECTION A & E



SECTION B & F



SECTION C



SECTION D

STANDARD SPECIFICATIONS:

1. MAT SURFACE:  
 REGULAR DUTY CARPET: 100% NYLON CARPET, FUSION BONDED TO VINYL BACKING.  
 HEAVY DUTY CARPET: 100% POLYPROPYLENE FIBERS (80/20 BLEND OF 600/12 DENIER MULTIFILAMENT AND 595 DENIER MONOFILAMENT) FUSION BONDED TO VINYL BACKING.
2. GRID MATERIAL: EXTRUDED ALUMINUM (ALLOY 6063-T6)
3. FRAMES: EXTRUDED ALUMINUM (ALLOY 6063-T6)
4. STANDARD MAXIMUM LIVE LOAD: 200 LBS PER SQUARE FOOT
5. TOLERANCES: FRAME -- +0/- .125"  
 MAT -- +0/- .125"

MODEL: KDCP  
 FRAME FINISH: MILL  
 GRID FINISH: MILL  
 CARPET COLOR:  
 cpp.ptn